

'SIMPLICITY'

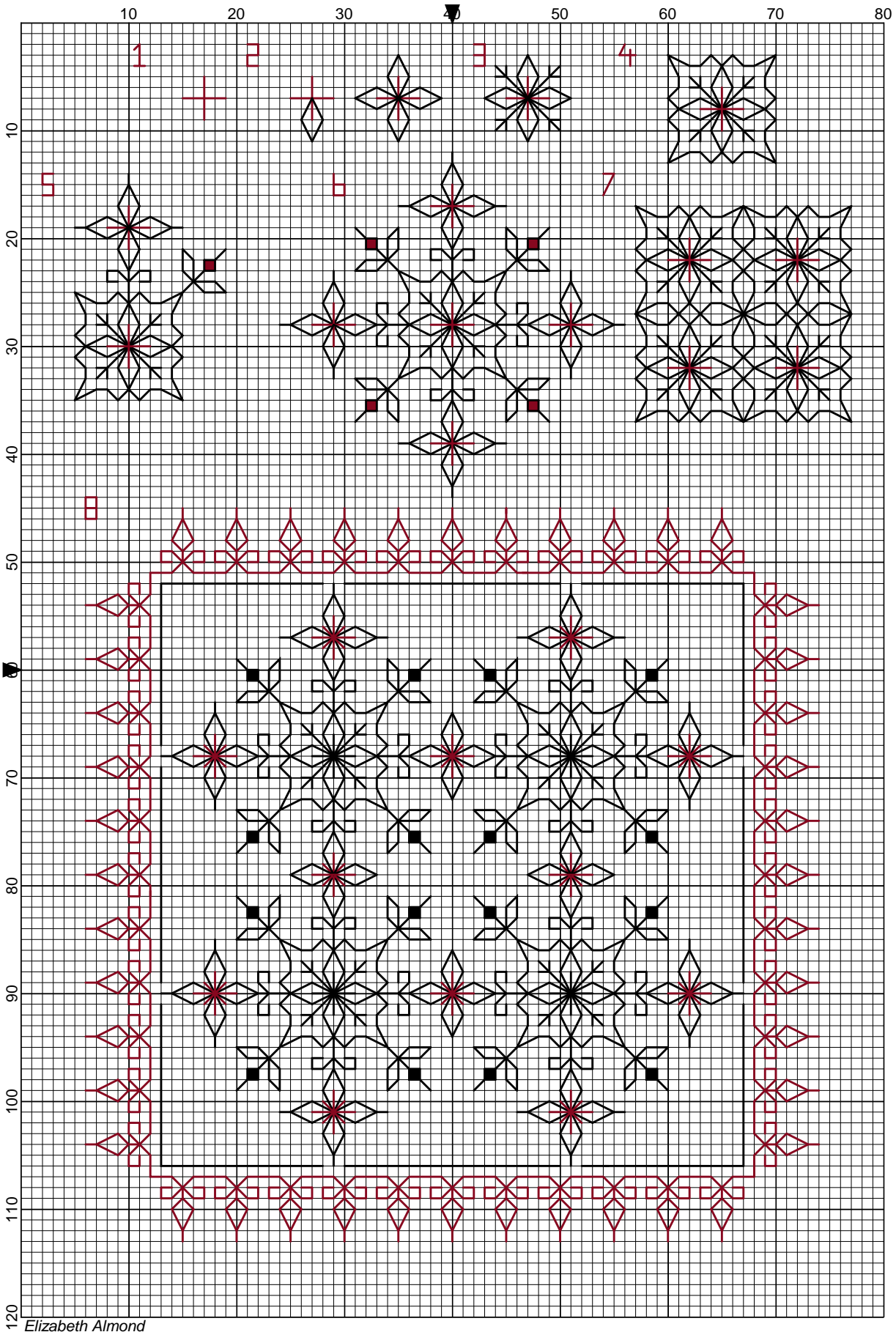
Blackwork Journey - designs by Elizabeth Almond



Happy Christmas from Blackwork Journey

2014

www.blackworkjourney.co.uk



Simplicity Christmas 2014

Author: Elizabeth Almond
Copyright: Elizabeth Almond
Grid Size: 80W x 120H
Design Area: 5.36" x 7.93" (75 x 111 stitches)

Legend:

■ [2] DMC-310 ANC-403 black ■ [2] DMC-815 ANC-44 garnet - md

Backstitch Lines:

———— DMC-310 black ————— DMC-815 garnet - md

Pattern development in Blackwork can be as simple or as complicated as you choose to make. If you are new to blackwork follow the stages carefully looking at the grids lines.

Aida blockweave ONE square on the chart = ONE square on the fabric
28 count evenweave TWO threads= One stitch on the fabric.
Please note many of the diamond stitches travel over TWO squares or FOUR threads.

Material: 28 count evenweave Or 14 count Aida blockweave

Small design No 6: 31 x 31 stitches. Material required: 7 x 7 inches
Small design No 7: 20 x 20 stitches. Material required: 6 x 6 inches
Large design No 8: 68 x 68 stitches. Material required: 10 x 10 inches

Threads:

DMC stranded cotton
310 black, one skein
815 Garnet, one skein (Other colours could be used in place of garnet)
Tapestry needle No. 24. (The needle should pass easily through the fabric and the eye should be big enough to see to thread!)

Stitches used:

Back stitch, one skein - ONE strand of thread
Cross stitch, one skein - TWO strands of thread

Method:

1. Find the centre of the fabric and work outwards using ONE strand of thread for the back stitch and TWO strands for the cross stitch.
2. Count carefully and LOOK at the stitches to see which ones are ONE square wide but TWO squares long. (See picture) Build the pattern up step by step, adding each section in turn until Step 4 is completed.
3. Work round the central motif adding in the flowers and leaves until the motif is completed.
4. Take four motif centres and join them together to make a small square block 20 x 20 stitches. Use the design as a gift tag or card insert.
5. The small design No 6: 31 x 31 stitches is a pretty single motif which can be used on its own or joined together to make a more complex pattern (No 8)
6. The large design No 8: 68 x 68 stitches is made by joining four of the motifs together and adding a simple border using a variation of the flower design (see chart).
7. Beads can be added to the centres of the flowers if required. Add the beads after the embroidery has been completed using matching thread.
8. Place the embroidery face down on a soft towel and press lightly.

I hope you enjoy working these simple designs. The pattern is taken from the 'Save the Stitches' e-book which is available from Blackwork Journey.

If you have any queries please contact:

lizalmond@blackworkjourney.co.uk